

JOHNSTON SHOPFITTERS YOUR PARTNER IN RETAIL DESIGN, MANUFACTURE, INSTALLATION & PROJECT MANAGEMENT OF BESPOKE & STANDARD SHOPFITTINGS



JOHNSTON SHOPFITTERS

THE RETAIL DESIGNERS WHO GET SHOPFITTING
THE SHOPFITTERS WHO GET RETAIL DESIGN

Johnston Shopfitters is a member of the Johnston Fitout Group



COMMERCIAL & RETAIL FIT-OUTS

In partnership with & supported by:



WELCOME

JOHNSTON SHOPFITTERS

VISION STATEMENT

We aim to be regarded as the leading provider of fit-out services and equipment to all retail and commercial sectors. Providing our customers with a reputational led focus on excellence in design, build, manufacture, installation and customer service.

Serving the retail sector for over 75 years, Johnston Shopfitters have established a reputation for being the market leader in full turnkey retail installations. Through a unique mix of traditional skills and cutting-edge technology we have developed over time a distinctive range of products and services, to offer our clients the very latest in unique shopfitting packages.

With a heavy focus on creative design from our dedicated CAD/CAM design teams, we can bring your retail space to life and maximise the functionality and aesthetics of your store to ensure your customers have the best shopping experience possible.

We have our own in-house manufacturing facilities, using the very latest technology, which can produce stunning timber, metal and/or glass bespoke units to best merchandise your product offering. Our experienced installation teams and dedicated project management service bring your vision to life ensuring your project is completed within budget and always on time.

We also stock an enormous range of ex-stock shelving, display and POS equipment in our large warehouse facilities, located in both Doncaster & Dublin, for all your day-to-day needs.

Team Johnston Shopfitters

CONTENTS

02	CONTENTS
03	WELCOME
04	OUR SERVICES
06	OUR QUALITY PROCESS
08	OUR PROJECTS
22	OUR CIRCLE OF FRIENDS
23	TESTIMONIALS
24	CONTACTS

Johnston Shopfitters your partner in Design, Manufacture, Installation & Project Management of Bespoke & standard commercial fittings.

Johnston Shopfitters now Celebrating over 75 Years, Serving you our customer & your Business in turn-key Fit-out solutions.



WHAT WE DO FOR YOU

DESIGN SOLUTIONS



At Johnston's we believe in the idea that form follows function and we believe in a system that will allow you to realise your full business potential. This key principle is integral to what we do and who we are and although we are staunch proponents of visually arresting commercial environments we always consider the workings of your building to be of paramount importance. We create interior environments geared towards maximising sales. We ensure that our design is tailored to each specific environment to gain the optimal output in the space.

IN-HOUSE PRINTING



We are equipped with both large format ink jet and UV printers, allowing us to produce onto many different media types, ranging from short runs of POS and posters, roll-up and pop-up displays, wall and window graphics, large format banners, and a wide variety of different options for both indoor and outdoor use, as well as the ability to print directly onto any substrate up to 2.5 meters wide.

SIGNAGE



Our In-house works gives us the ability to produce a wide range of finished signage and display graphics. We offer a complete solution for all types of signage including shop fronts, window graphics, vehicle lettering, safety signs, magnetic signage, raised & LED lettering.

THE SCIENCE

Working closely with our clients we generate detailed plans taking into consideration such elements as product placement plus customer & staff flow. We work to ensure the operation and functionality of the environment is designed to realise its full potential.

CONCEPT GENERATION

Once the layout planning is complete we move into concept generation where we will start the process of creating a new bespoke design.



CONCEPT DEVELOPMENT

Using top of the line technology and software our creative design team create detailed photo-realistic 3D visuals and animations that clearly present the new concept.

TECHNICAL DEVELOPMENT

Technical development, or as it's known here at Johnston's 'the nuts & bolts' is where concept becomes reality and the designs are brought to fruition. We hand our creative concepts to the development team and they begin the process of calculating the intricacies of the design. We consider the fine details to be of paramount importance. Our development team work hand in hand with the manufacturing department who set out all the workings of the drawings ready for production roll-out. Our technical development and expertise doesn't end here, we also have site specific development and produce our own M&E drawings.

IN-HOUSE MANUFACTURE



We have our own in-house manufacturing facility located in West Dublin allowing us to service large contracts which include nationwide and international roll-outs as well as one off bespoke contracts.

Manufacturing services include;

- VALUE ENGINEERING
- PROTOTYPING
- TIMBER & METAL
- GLASS & ACRYLIC
- SPRAY PAINTING
- POWDER COATING

PROJECT MANAGEMENT



At Johnston's our Contracts and Project Management team work closely with our in-house CAD & Manufacturing departments to ensure all areas of the project are exposed prior to going live. We build firm relationships with our clients to understand what it is that matters to them. With that our Clients are confident their Project will be delivered Safely within time, budget and most importantly with the Quality Expected.

Project Management services include;

- MAIN CONTRACTORS
- SUB CONTRACTOR CLIENT LIAISON
- ROLL OUT PLANNING
- BUILDING WORKS
- DELIVERY & INSTALLATION
- CONTRACT CLEANING

PRODUCTION FACILITIES



WAREHOUSE STORAGE



IN-HOUSE PRINT



DUBLIN SHOWROOMS



TURN-KEY FIT-OUT



Our clients expect great service and fitting of the very highest standard. We are proud of what we do and are committed to offering exemplary fit-out services. We are involved with the project from the initial site surveys right through to installation.

CERTIFICATION



Our business operates according to all required standards, directives and laws. Where required we provide a full Certification & Conformance service including;

- TENDERS & LANDLORD SUBMISSIONS
- HEALTH & SAFETY PLANNING
- PERMITS & CONFORMANCE
- FIRE & DAC CERTS.

CUSTOMER SERVICE



We will endeavour at all times to provide our customers, clients and their staff, with the very best of service, support, advice and facilitation.

That all staff and associates of the company are appropriately qualified.

Present a respectful, friendly and supportive attitude at all times.

Telephone and e-mail enquiries to be responded to within three working days.



DUBLIN IRELAND

Design Studio, Showrooms, Manufacturing, Warehousing and Customer Service facilities at our Dublin HQ.

Unit E
Bluebell Industrial Estate
Naas Road
Dublin 12

D12 P922
Ireland

T +353 (0)1 419 0419

BALLYMENA NI

Customer Service facilities at our NI HQ.

25A Woodside Road
Industrial Estate
Ballymena
Co. Antrim

BT42 4QJ
N.Ireland

T. 028 2562 2032

DONCASTER UK

Design Studio, Warehousing and Customer Service facilities at our UK HQ.

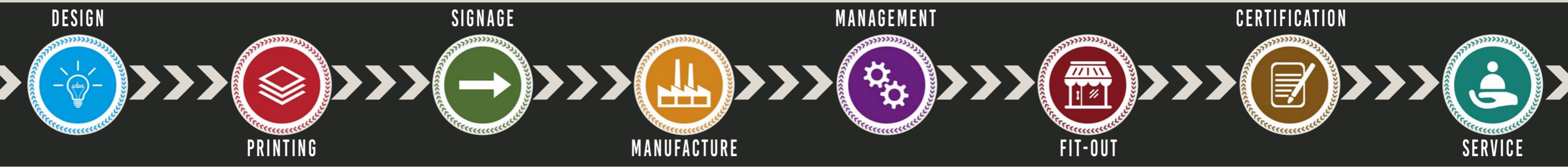
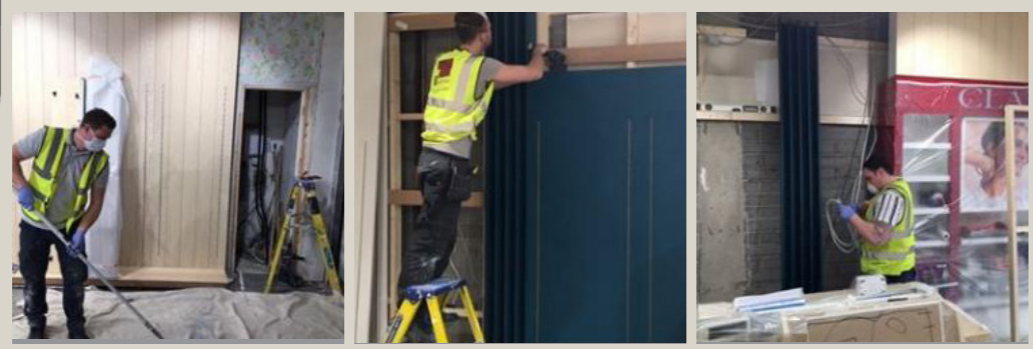
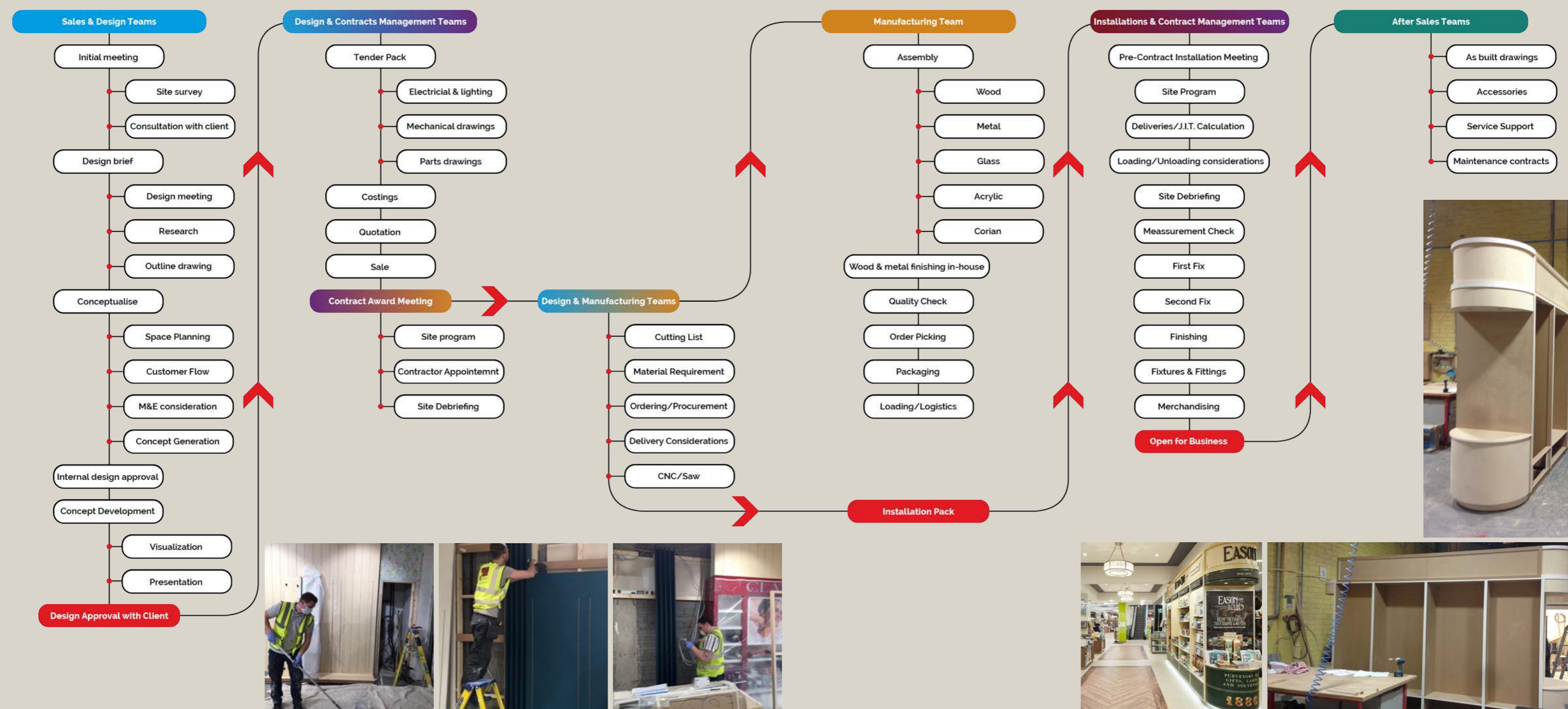
Unit 10 Kirk Lane
Kirk Sandall
Doncaster
South Yorkshire

DN3 1GZ
UK

T. +44 (0)1 302 885 785

RIGHT FIRST TIME EVERY TIME

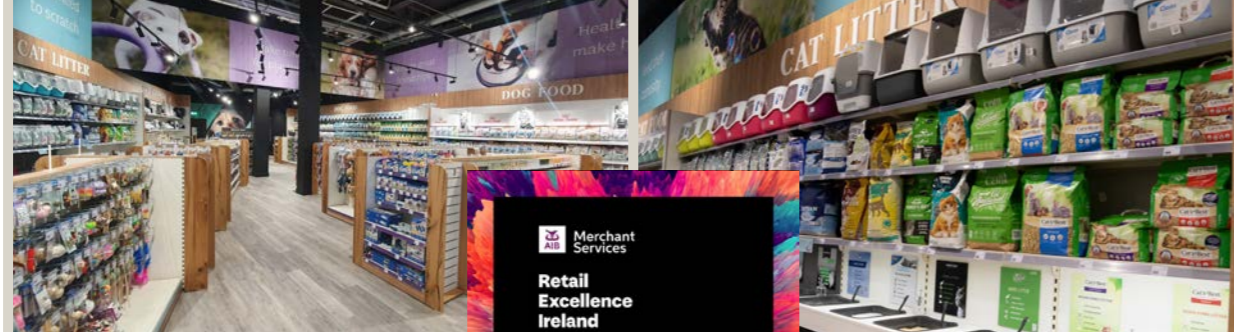
OUR QUALITY PROCESS



'Your dreams, our passion.'

'You're in safe hands.'

Petstóp



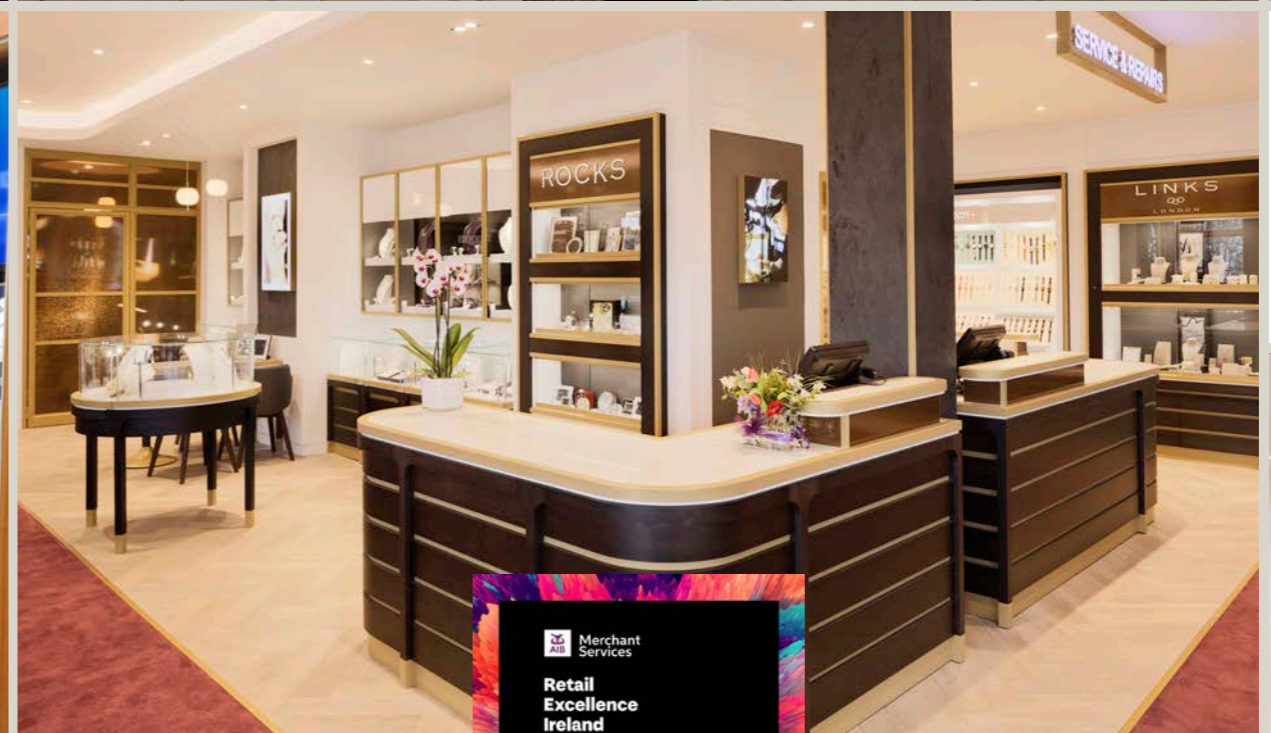
Merchant Services
Retail Excellence Ireland Awards 2022
WINNER
PETSTOP
NATIONAL RETAILER OF THE YEAR



The Fragrance Shop
Spray a little happiness



LIFE STYLE SPORTS



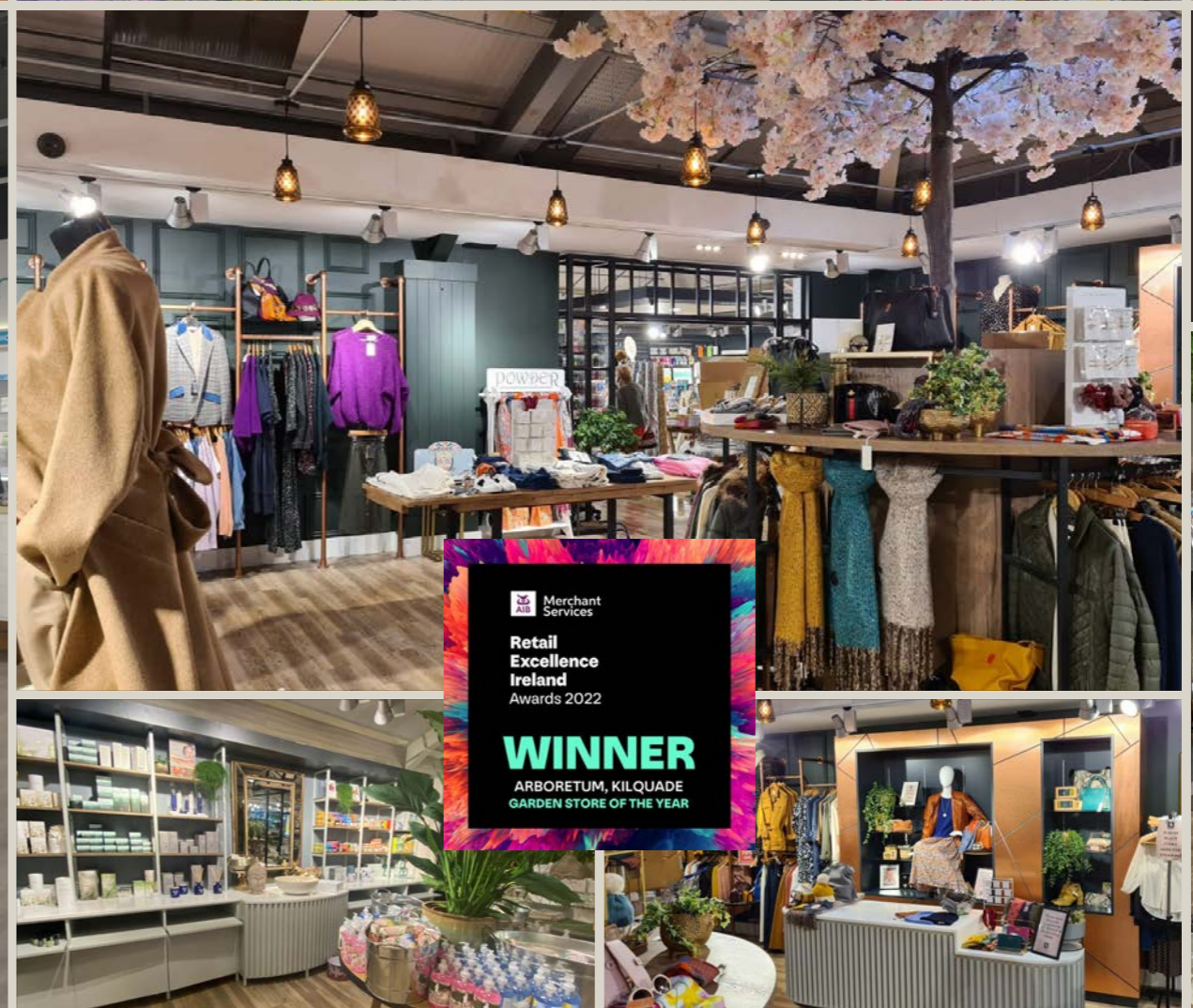
ROCKS
JEWELLERS

Merchant Services
Retail Excellence Ireland Awards 2022
WINNER
ROCK JEWELLERS, STILLORGAN
JEWELLERY/GIFT STORE OF THE YEAR

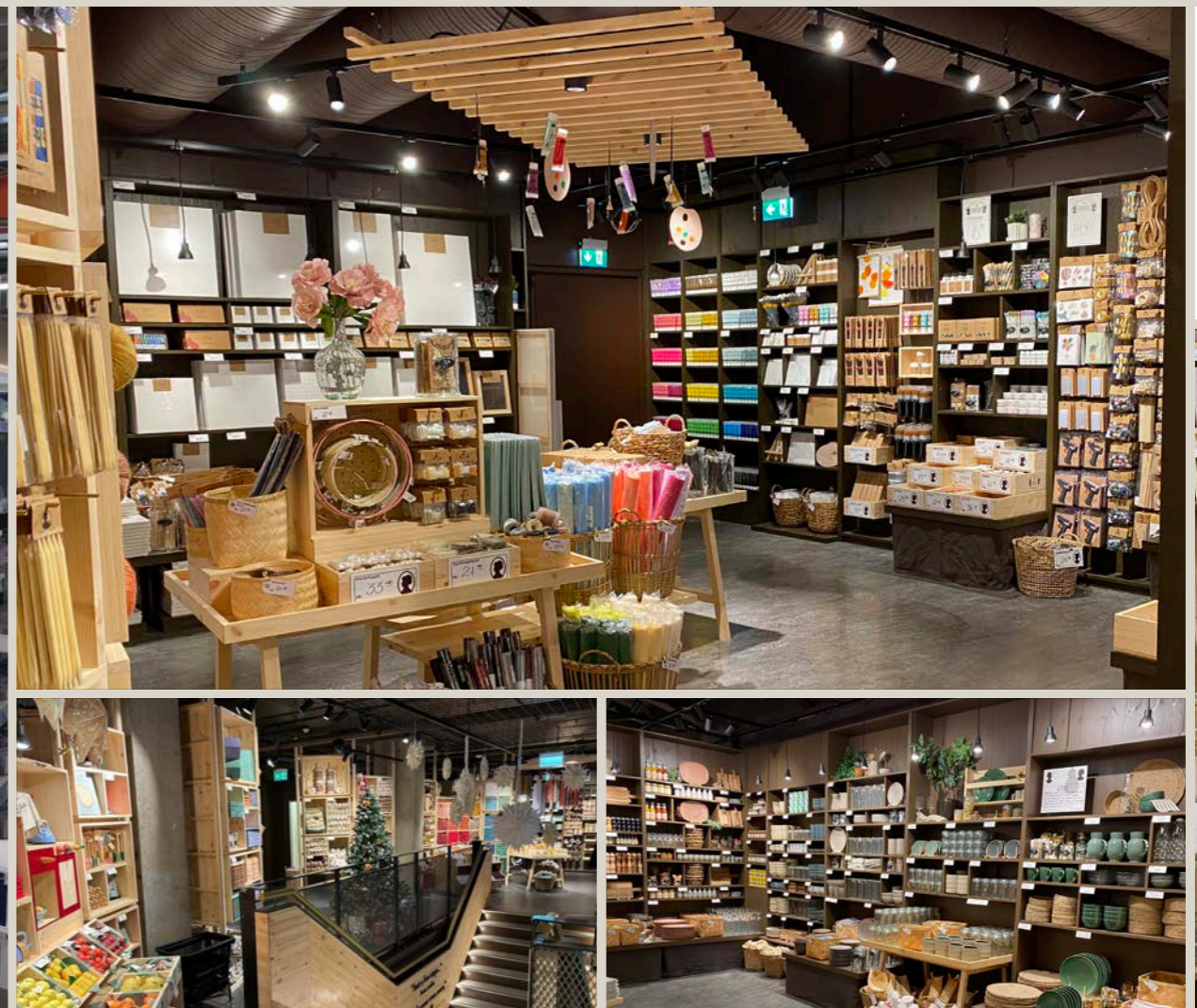


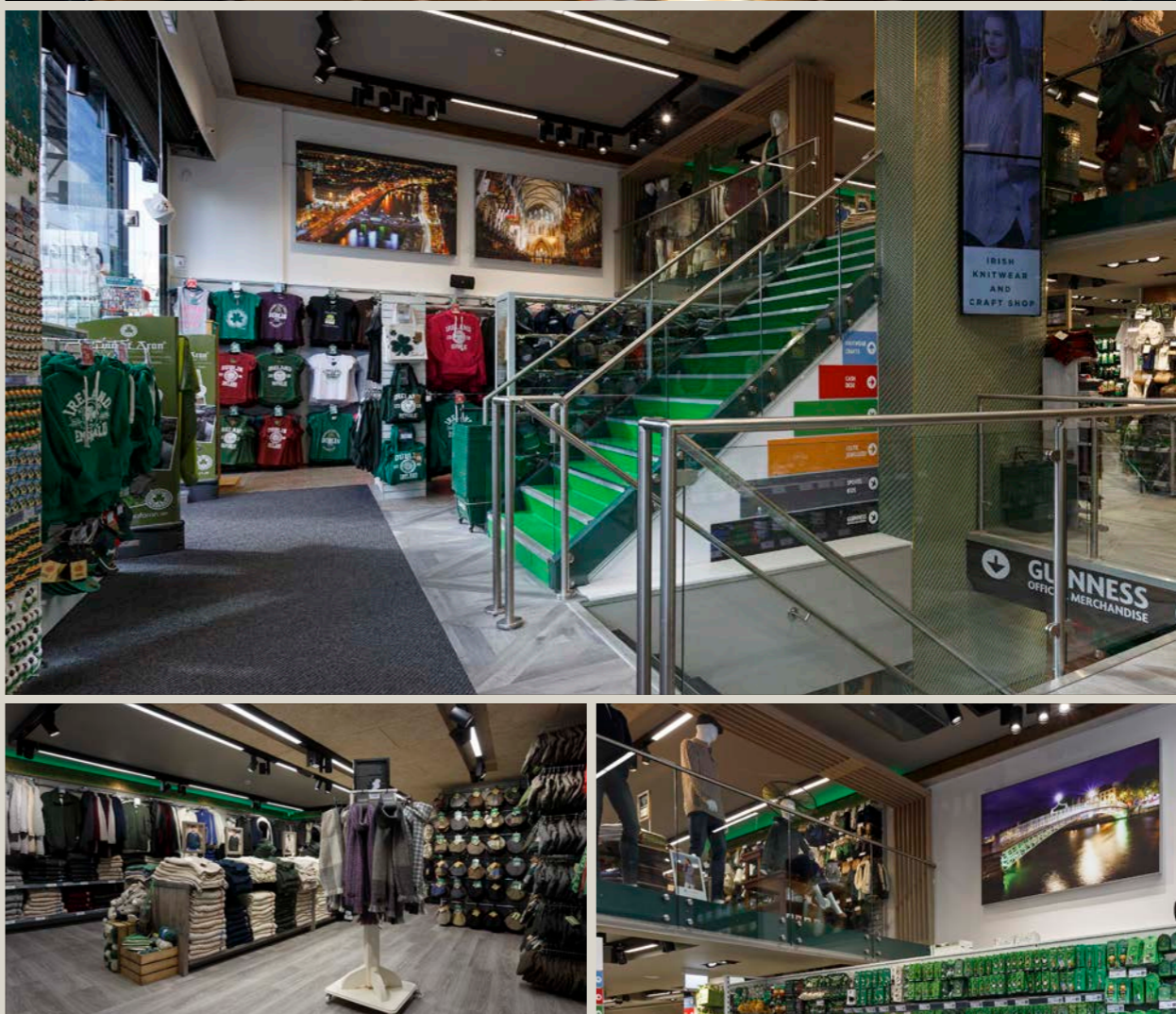
"From their initial tender process, through to their Project Management and final turn-key completion, we found Johnston's to be thoroughly efficient and professional."

"It all hinges on the quality of the build and that is why we work with the Johnston Shopfitters team."











HOME
FOCUS
AT HICKEYS



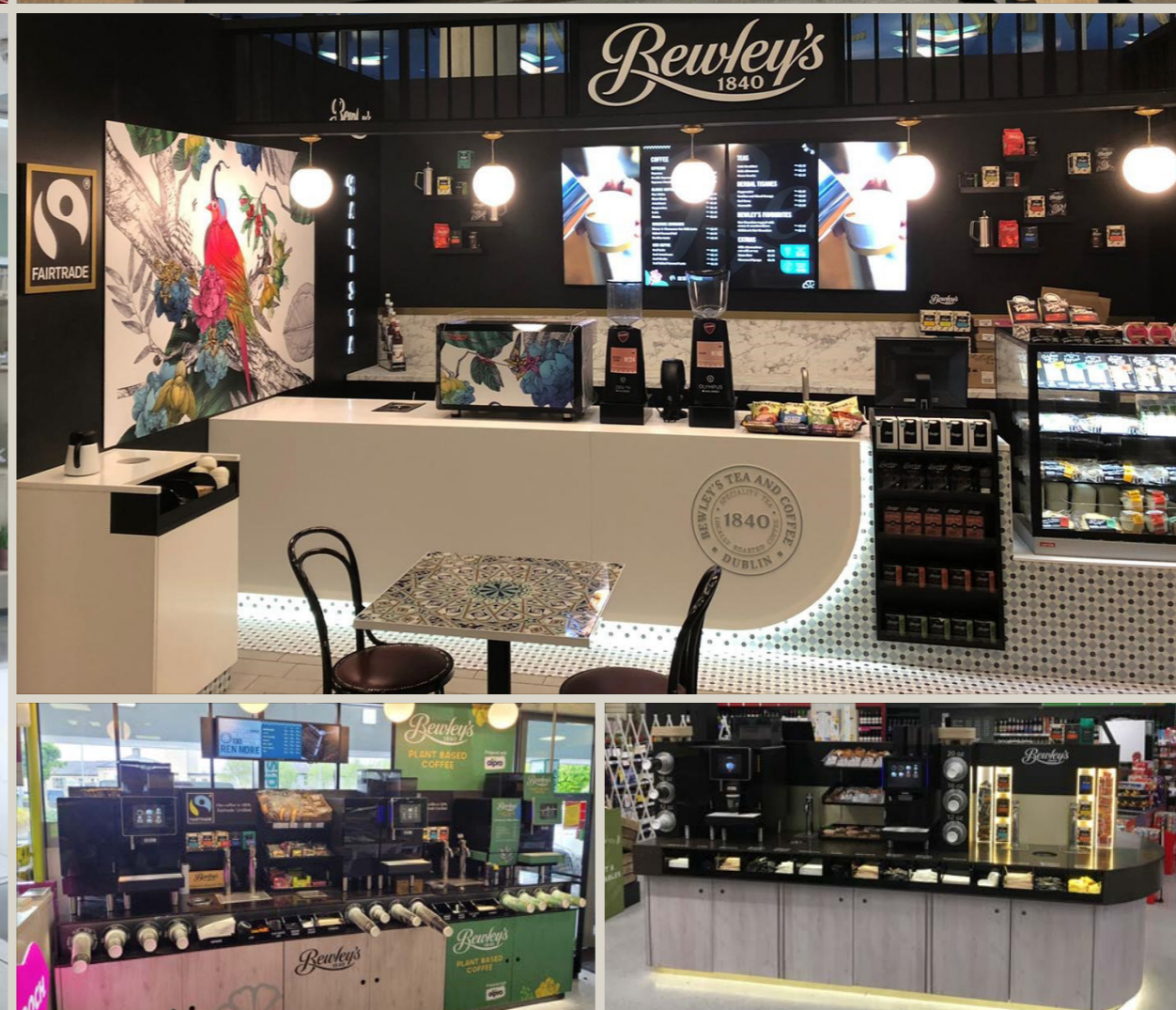
HOME
FOCUS
AT HICKEYS





CELIAR22





TONY KEALYS



THE INK FACTORY



ICONIC OFFICES



TULA MEXICAN GRILL



"The quality of the Shop fit itself was exceptional and the communication throughout the process was exemplary."

"The shopfittings that create the right image for a supplier promote both the goods & the shop."

OUR CIRCLE OF FRIENDS



'We would highly recommend Johnston Shopfitters. Very professional, creative and an excellent finish with our very unique boutique store. The end project was delivered to an incredibly high standard and beyond our expectations. As a result it's been very well received with much higher footfall than we had anticipated.'

Denise Buckley & David Quirke Sugar Plum Sweetery

'I have been working with Johnston's for many years, and together we have opened many Regatta Great Outdoor shops in Ireland. The critical path used by the shopfit team allows me to plan delivery dates for stock, start dates for new staff and media campaigns. Such is my confidence with this Dublin based company that we have used them to build shops for us across the UK, Spain, Holland and on the East Coast of America.'

Brian Fox Director Regatta Great Outdoors Ireland

'Johnston's team have brought a wealth of expertise, knowledge and efficiency to our program, and partnered with us to deliver a solution driven approach. They deliver a high quality and cost effective finished product. We look forward to continuing our long-term work with Johnston Shopfitters, as all Three Ireland's 60 stores are expected to complete their transformation by 2023.'

Ronan Gibney Head of Sales Three Ireland

'Bewley's have been working with Johnston Shopfitters since 2016. Core to the success has been the partnership approach in working together to develop a turn-key solutions that translates brand led vision into real world executions. Bewley's see's world class design as a critical competency for our brands going forward but it all hinges on the quality of the build and that is why we work with the Johnston Shopfitters team.'

Peter Murphy Marketing Manager Bewley's

'Partnering with Johnston Shopfitters enabled us to open stores in rapid succession. During that intense expansion period we found Johnston's to be a competitive and professional partner working closely with our Ireland and Denmark teams to demanding deadlines. As a small company, we found that Johnston's are particularly attentive to our project management needs and have more than exceeded our expectations.'

Niall Lawlor MD Søstrene Grene

'Johnston's have a very hands on approach at every level within the team which ensures the 'job gets done'. Their ability to turn around our requirements in such a short period of time is one of their strongest attributes this together with their complete project management service means they are the perfect fit for all our fit-out requirements.'

Wilf Cooledge Head of Store Development at Eason



'Johnston Shopfitters were appointed as Main Contractor for our Gorey branch refurbishment after a successful tender submission. The project itself was of significant scale and value with a complete overhaul of the retail and showroom areas including large demolition works, mechanical, electrical and shopfitting elements. We would have no hesitation in recommending Johnston Shopfitters for any fit-out project and look forward to working with them in the future.'

Niall Reynolds - Head of Group Building Services

'Like ourselves, Johnston's are a long time in the retail business, and this was clearly demonstrated and shown on a day to day basis with their extraordinary on-site fit-out knowledge and their shopfitting expertise displayed in their in-house manufacture of our fully bespoke shopfit interior. From their complete project and program management service, to their fit-out and customer service teams, no ask was ever too big.'

Robert Rock Rocks Jewellers

'We have been working with Johnston's for a number of years and have always found that they provide us with a most competitive, innovative and professional service. Our company undergoes regular image revisions and consequently our store layouts need constant updates. Johnston's have always been able to rise to this challenge and have continually exceeded our expectations.'

Colm Carroll Chairman of the Board of Directors Carrolls Irish Gifts

'I worked with Johnston Shopfitters on my most recent project in Dublin, and it was almost too easy. Johnston's in-depth knowledge throughout the process is invaluable. Their ability to problem-solve, along with their project management and people management skills, makes it an obvious choice to make Johnston Shopfitters your first call if you're considering any building or fitout projects, irrelevant of size or complexity.'

Paul Abbott Grooming Dog

'We have worked with Johnston Shopfitters on many of our retail projects. As ever they are always a pleasure to work with and bring together a wealth of expertise and knowledge to all of our fit-out projects. Johnston's deliver a high quality, cost effective finished product, partnered with a solution driven approach. Johnston Shopfitters passion, professionalism, innovation and efficiency, is reflected in all aspects of their project management, manufacture and installation.'

Fergal Doyle-Co-Owner & CCO Arboretum

'The best word to describe Johnston's that is vital within our fast moving store opening programme is 'flexible'. Johnston's understand that things can and do change, and are willing to work with us to achieve the final goal as quickly and cost effectively as possible. They employ a 'can-do attitude', deliver quality 'on-time' projects and service with a smile.'

Jackie Prescott Manager, New Store Development & Facilities at Fexco No.1 Currency

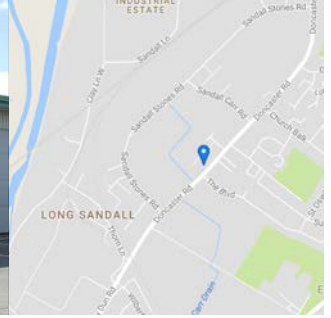




Johnston Shopfitters is a member of the Johnston Fitout Group

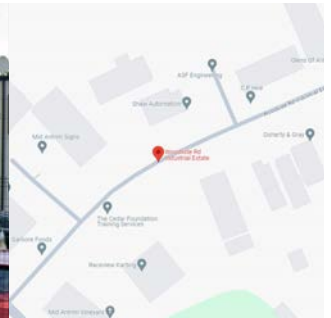


like what we do



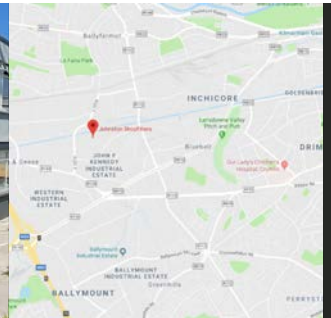
Doncaster

Unit 10 Kirk Lane
Kirk Sandall
Doncaster
South Yorkshire
DN3 1GZ UK
T. +44 (0)1 302 885 785



Ballymena

25A Woodside Road Ind. Est.
Ballymena
Co. Antrim
BT42 4QJ
N. Ireland
T. 028 2562 2032



Dublin

Unit E
Bluebell Ind. Est.
Dublin 12
D12 P922
Ireland
T. +353 (0)1 419 041

JOHNSTON-SHOPFITTERS.COM

SUPPORT@JOHNSTON-SHOPFITTERS.COM