

BYDEKO System



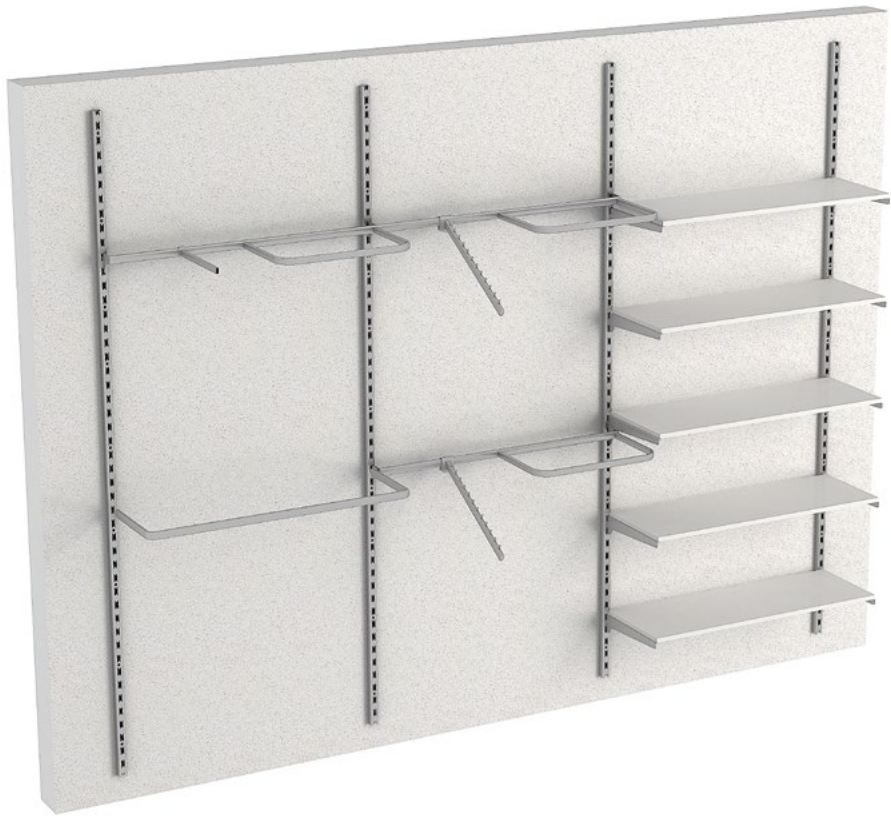
50mm pitch

The complete family
of retail solutions

JOHNSTON

HOPFITTERS

U-CHANNEL



Bydeko U-Channel entry level uprights are a cost effective, screw fixed upright and can be used with all Bydeko display accessories. Offers a high level of flexibility for merchandise displays.



BOX UPRIGHTS



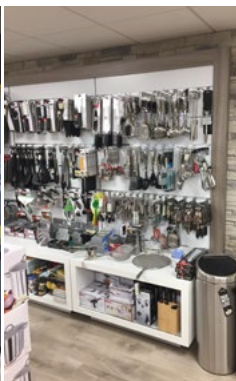
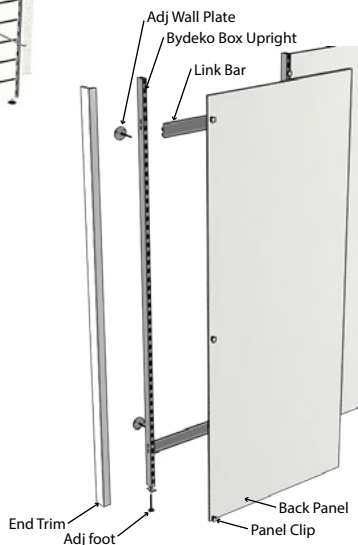
Bydeko Box Uprights are the most versatile wall fixed vertical support system for Bydeko equipment. With adjustability in 4 planes the Bydeko Box Upright is ideal for any installation situation.



PERIMETER SYSTEM



Bydeko Perimeter System uses Bydeko Box Uprights with link bars and/ or panel-clips to carry a variety of different backpanels. Panels can be slotted, printed, wood veneer or melamines, made to order.



LINE SYSTEM



Bydeko Line System uprights offer a minimalist appearance for retail wall displays. The ultra-slim aluminium uprights can be fixed directly to the wall or mounted to the back of panels.





Bydeko U-channel upright

	Size	Finish	Code
Wall fixed.	Length 240cm	Silver	NSU-02-40
Requires solid	Length 240cm	Black	NSU-02-41
fixing grounds.	Length 240cm	Chrome	NSU-02-66
Custom colours available.			



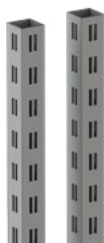
Bydeko Box upright

	Size	Finish	Code
5cm x 2.5cm box	Length 240cm	Silver	NSU-03-40
section.	Length 240cm	Black	NSU-03-41
5cm/50mm pitch.	Length 240cm	Cream	NSU-03-42
Requires fixing	Length 300cm	Silver	NSU-04-40
plates.	Length 300cm	Black	NSU-04-41
	Length 300cm	Cream	NSU-04-42



Bydeko Round upright

	Size	Finish	Code
6cm Round section.	Length 148cm	Silver	NSU-07-40
5cm/50mm pitch.	Length 240cm	Silver	NSU-08-40
Requires fixing	Length 240cm	Chrome	NSU-08-66
plates.			



Bydeko Square upright

	Size	Finish	Code
4cm square tubing.	Length 240cm	Silver	NSU-10-40
5cm/50mm pitch.	Length 240cm	Black	NSU-10-41
Requires fixing			
plates.			



Bydeko Line slimline upright

	Size	Finish	Code
Single track.	Length 240cm	Aluminium	NSU-15-50
Double track.	Length 240cm	Aluminium	NSU-16-50
Single track left	Length 240cm	Aluminium	NSU-18-50
hand.	Length 240cm	Aluminium	NSU-19-50
Single track right	Length 240cm	Aluminium	NSU-19-50
hand.			
5cm/50mm pitch.			



Bydeko Fixing Plate (adjustable)

	Size	Finish	Code
Use 2 with NSU-03. Length 75mm		Silver	NSF-01-40
Use 3 with NSU-04.		Black	NSF-01-41
		Cream	NSF-01-42



Bydeko end fixing plate (adjustable)

	Size	Finish	Code
Use 2 with NSU-03. Length 75mm		Silver	NSF-02-40
Use 3 with NSU-04.			



Bydeko round/square fixing plate

	Size	Finish	Code
Fixed depth.		Silver	NSF-03-40
Fits NSU-07/08/10.			



Bydeko threaded insert

	Size	Finish	Code
Round	6cm	Black	NSBF-03
Rectangular	50 x 25	Black	NSBF-20



Bydeko round threaded foot

	Size	Finish	Code
Fits NSBF-03	1 cm	Black	NSBF-04



Bydeko hanging rail

	Size:	Finish:	Code:
Rail to take saddle arms.	65cm	Chrome	NSR-01-66
	65cm	Silver	NSR-01-40
2.5mm wall thickness.	100cm	Chrome	NSR-02-66
	100cm	Silver	NSR-02-40
	120cm-135cm	Chrome	NSR-03-66
	125cm	Chrome	NSR-04-66



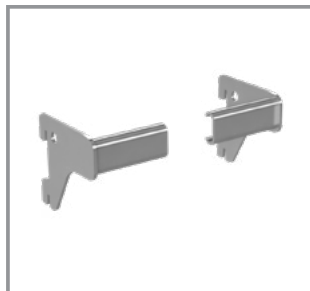
Bydeko straight rail

	Size:	Finish:	Code:
D-shaped bar for side hanging.	65cm	Chrome	NSR-05-66
	65cm	Silver	NSR-05-40
	100cm	Chrome	NSR-06-66
	100cm	Silver	NSR-06-40
	125cm	Chrome	NSR-07-66



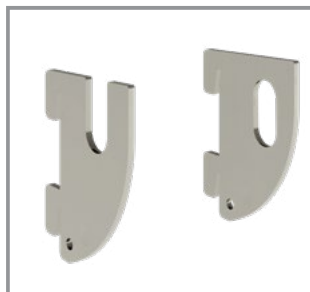
Bydeko clip on co-ordinate rail

	Size:	Finish:	Code:
D-shaped bar for side hanging.	40cm	Chrome	NSR-11-66
	50cm	Silver	NSR-11-40
		Chrome	NSR-12-66



Bydeko hanging rail brackets pair chrome

	Size:	Finish:	Code:
Knock-in end brackets to assemble custom sized hanging rails.	Custom	Chrome	NSB-01-66



Bydeko brackets for accessory rails

	Size:	Finish:	Code:
Saddle Bracket.		Stainless Steel	NSB-50-66
Bracket with hole.		Stainless Steel	NSB-51-66

Bydeko universal timber shelf bracket

Sold in pairs.

For shelves up to
19mm.

Size:

Finish:

Code:

Chrome

NSB-05-66

Bydeko universal glass shelf brackets

Sold in pairs.

For shelves up to
10mm.

Size:

Finish:

Code:

Silver

NSB-04-40

Black

NSB-04-41

Cream

NSB-04-42

Chrome

NSB-04-66

Bydeko timber shelf brackets

Sold in pairs.

fits to the upright at 25cm
90° for a flat shelf
or 75° for a forward
slope.

Size:

Finish:

Code:

20cm

Chrome

NSB-20-66

25cm

Chrome

NSB-25-66

30cm

Chrome

NSB-30-66

30cm

Silver

NSB-30-40

30cm

Black

NSB-30-41

35cm

Silver

NSB-35-40

35cm

Black

NSB-35-41

35cm

Cream

NSB-35-42

40cm

Black

NSB-40-41

40cm

Cream

NSB-40-42

Suction pad 15mmSuitable for glass
shelves using timber
shelf brackets

Size:

Finish:

Code:

Clear

TRI-54-00



Bydeko straight arm

	Size	Finish	Code
For forward display.	Length 300mm	Chrome	NSA-15-66
	Length 400mm	Chrome	NSA-16-66
Hooks over hanging rail.	Length 400mm	Silver	NSA-16-40



Bydeko slim straight arm Ø10mm

	Size	Finish	Code
For forward display.	Length 30cm	Chrome	NSA-17-66
Hooks over hanging rail.			



Bydeko slim 2 step arm Ø10mm

	Size	Finish	Code
For 2-tier display.	Length 30cm	Chrome	NSA-18-66
Hooks over hanging rail.	Height 15cm		



Bydeko slim slope arm Ø10mm

	Size	Finish	Code
Forward sloping.	Length 30cm	Chrome	NSA-19-66
Hooks over hanging rail.	Height 15cm		



Bydeko sloping straight arm

	Size	Finish	Code
For sloped and forward display.	Length 30cm	Chrome	NSA-20-66
Hooks over hanging rail.	Height 12cm		



Bydeko single prong

	Size:	Finish:	Code:
Saddle prong for	15cm	Chrome	NSA-01-66
light weight items.	20cm	Chrome	NSA-02-66
Hooks over hanging rail.	25cm	Chrome	NSA-03-66



Bydeko euro hook

	Size:	Finish:	Code:
Saddle euro hook	15cm	Chrome	NSA-05-66
for light weight	20cm	Chrome	NSA-06-66
items.	25cm	Chrome	NSA-07-66
Hooks over hanging rail.			



Bydeko pin slope arm

	Size:	Finish:	Code:
Forward sloping.	Length 40cm	Chrome	NSA-10-66
Hooks over hanging rail.	Height 20cm		



Bydeko elevated straight arm

	Size:	Finish:	Code:
For forward display	Length 40cm	Chrome	NSA-60-66
Hooks over hanging rail.	Height 15cm		



Bydeko 2-step arm

	Size:	Finish:	Code:
For 2-tier display.	Length 40cm	Chrome	NSA-12-66
Hooks over hanging rail.	Height 20cm		



Bydeko display ring Ø10mm

	Size:	Finish:	Code:
For balls, scarves & belts.	Length 30cm Ring Ø 15cm	Chrome	NSA-25-66
Hooks over hanging rail.			



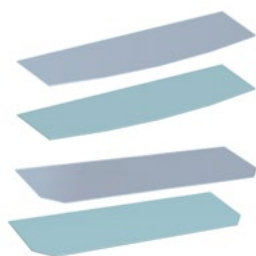
Bydeko millinery arm Ø10mm

	Size:	Finish:	Code:
Hat display arm.	Length 20cm	Silver	NSA-33-40
Hooks over hanging rail. Height 20cm			



Bydeko flat wooden shelf (Brackets not included.)

	Size:	Finish:	Code:
At our own woodworks we can customise the design and finish of shelves to suit your requirements.	cm 65x35	Satin colours	NSS-01-01
	cm 65x35	High gloss colour	NSS-01-10
	cm 65x35	Timber veneers	NSS-01-20
	cm 100x35	Satin colours	NSS-02-01
	cm 100x35	High gloss colour	NSS-02-10
	cm 100x35	Timber veneers	NSS-02-20



Bydeko glass shelf (Brackets not included.)

	Size:	Finish:	Code:
6mm Curved Front	cm 100x35	Frosted	GS-06-FT
6mm Curved Front	cm 100x35	Clear	GS-06-CT
6mm Splayed Corner	cm 100x35	Frosted	GS-02-FT
6mm Splayed Corner	cm 100x35	Clear	GS-02-CT
6mm Splayed Corner	cm 60x35	Clear	GS-13-CT
6mm Splayed Corner	cm 120x35	Clear	GS-09-CT



Bydeko glass support bracket for rails

	Size:	Finish:	Code:
Set of 4 clips for straight rail to hold shelves.		Chrome	NSB-03-66



Bydeko direct entry straight arm for upright

	Size:	Finish:	Code:
Forward display	Length 38cm	Chrome	NSA-40-66
Fits to upright			



Bydeko direct entry 2-step arm for upright

	Size:	Finish:	Code:
Oval Arm for	Length 30cm	Chrome	NSA-41-66
2-tier display	Height 15cm		
Fits to upright			



Bydeko direct entry millinery arm for upright Ø10mm

	Size:	Finish:	Code:
Hat display arm	Length 20cm	Silver	NSA-43-40
Fits to upright	Height 20cm		



Bydeko direct entry single shelf support bracket

	Size:	Finish:	Code:
For timber shelf only	Width 20cm	Silver	NSA-44-40
Fits to upright	Depth 20cm		

Suckers for glass shelves sold separately



Bydeko direct entry circular T-arm

	Size:	Finish:	Code:
T-arm for side hanging.	Length 30cm	Silver	NSA-45-40
Fits to upright.			



Bydeko Round/Square upright link bar

	Size	Finish	Code
Use for NSU-07/08.	100cm	Silver	NSL-10-40
	100cm	Silver	NSL-11-40
Use for NSU-10.			
Use 2 per bay.			



Bydeko Box Upright link bar

	Size:	Finish:	Code:
Use 2 with NSU-03	65cm	Chrome	NSL-65-66
Use 3 with NSU-04	100cm	Chrome	NSL-100-66



Shopshelf panel clip for timber panel pair 2400 silver

	Size	Finish	Code
For use with NSU-03 and NSU-04	240cm	Silver	SSPC-240-40



Bydeko Box upright backpanel clip

	Size	Finish	Code
Use for NSU-03.		Clear acrylic	NSPC-01-00



Bydeko Line upright panel clip

	Size	Finish	Code
Use with NSU-16	Double	Clear acrylic	NSPC-02-00
Use with NSU-15	Double	Clear acrylic	NSPC-03-00
Use with NSU-15	Left	Clear acrylic	NSPC-04-00
Use with NSU-15	Right	Clear acrylic	NSPC-05-00

Bydeko overarm for acrylic POS

Acrylic foldovers
can be fixed to flat
plate on front
Fits 30 x 15 flatside
oval.

POS sold
seperatley

Size:

Finish:

Code:

Chrome

NSA-26-66

Bydeko clear swing ticket holder set (sold seperatley)

Swing ticket holder. 85x105mm

Horseneck bracket.

Size:

Finish:

Code:

Clear

NST-20-00

clear

NST-21-00

Bydeko acrylic saddle for ticket holder

Receiver clip for

NST-10-66 ticket
holder.

Size:

Finish:

Code:

Chrome

NST-09

Bydeko ticket holder threaded

Fits into NST-09.

Size:

Finish:

Code:

Chrome

NST-10-66

Bydeko ticket holder saddle

Clip-on ticket
holder.

Fits 30x15 flatside
oval.

Size:

Finish:

Code:

Chrome

NST-15-66



**We offer a wide variety of colours, finishes and materials to order.
Woods, Veneers, Melamines, Paint Finishes, Fabrics, Print, Vinyl,
Solid Surface, Laminates, Glass, Acrylic, Stone, Metal, Powdercoating.**



www.johnston-shopfitters.com

sales@johnston-shopfitters

Unit E
Bluebell Ind. Est.
Dublin 12
D12 P922
Ireland

T. +353 (0)1 419 0419

Unit 10 Kirk Lane
Kirk Sandall
Doncaster
South Yorkshire
DN3 1GZ UK.

T. +44 (0)1 302 885 785